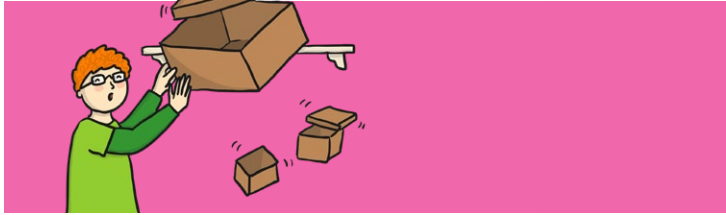


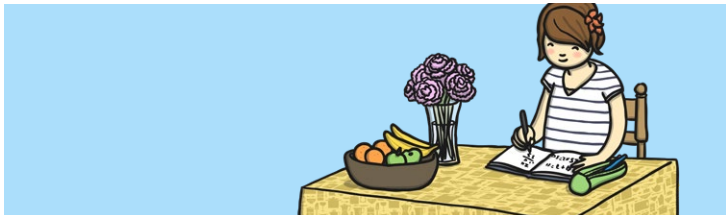
Introduction

This unit on land use provides children with the chance to take a careful look at the places around them, and begin to look for patterns in land use. They will become cartographers, making maps of the local area, and agricultural surveyors by considering where different types of farming activities occur within the UK.



Health & Safety

Lesson 3 takes place in the local area. Risk assessments should be completed in line with your school's policies.



Home Learning

I Spy on a Journey: Children are encouraged to observe the buildings and landmarks around them as they travel around by ticking off the places they see while on a journey.

What Happens to Our Wheat: Children find out what the wheat grown in the UK is used for, and create a graph of the different uses. They investigate items in their food cupboard that contain wheat flour.

Assessment Statements

By the end of this unit...

...all children should be able to:

- Explain the purpose of a sketch map.
- Identify the features of a sketch map.
- Identify important landmarks in the local area.
- Explain the purpose of symbols on a map.
- Use symbols and a key to annotate a map.
- Name landmarks we might see in a chosen area.
- List ways we use land in the UK.
- Describe an area as urban or rural.
- List different types of rural spaces.

...most children will be able to:

- Draw simple sketch map using major landmarks.
- Identify landmarks using a key.
- Draw a simple sketch map to show buildings in an area.
- Annotate a map to show major landmarks.
- List land uses in urban and rural areas.
- Identify rural and urban areas in the UK.
- Explain what most rural land is used for in the UK.
- Compare two maps.
- Explain why an area is suited to crop or livestock farming.

...some children will be able to:

- Compare a sketch map and a published map.
- Draw a sketch map showing relative distances.
- Choose symbols to use for a key.
- Annotate a sketch map to show relative distances.
- Describe ways farming has changed since 1950.

To look at all the resources in the Land Use unit [click here](#).

To find out more about PlanIt download our [free guide here](#).

Lesson Breakdown

Resources

1. Sketch Maps

To describe and understand key aspects of human geography including land use in the context of using sketch maps.

- I can use simple sketch maps that show how land is used.

To use fieldwork to observe, measure, record and present the human and physical features in the local area using a range of methods, including sketch maps in the context of drawing a sketch map.

- I can draw a simple sketch map.



2. Using a Key

Describe and understand key aspects of human geography including land use in the context of using keys and legends.

- I can use a key on a map to show how land is used.

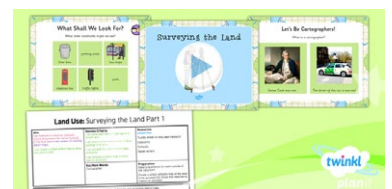


3. Surveying the Land Part 1

Use fieldwork to observe, measure, record and present the human features in the local area in the context of creating sketch maps.

- I can create a simple sketch map to show how land is used.

- Trundle wheel (or long tape measure)
- Clipboards
- Compass
- Digital camera



4. Surveying the Land Part 2

Use fieldwork to observe, measure, record and present the human features in the local area in the context of drawing a map.

- I can create a simple map to show how land is used.

- Children's sketch maps (from previous lesson)
- Template map of the area surveyed



5. How Land Is Used

Use maps and atlases to describe land use in the context of thinking about urban and rural areas.

- I can describe land use in urban and rural areas in the UK.

- Template map of the area surveyed
- Atlases



6. How Land Is Used for Farming

Use maps and atlases to describe land use in the context of thinking about agriculture.

- I can explain how land is used for different types of farming.

- DEFRA Maps of Livestock Populations and Maps of Crop Areas
- Atlases with a topographic map or Topographic Map of the UK

